

# UVCS-40/50/60 UVCS-CAP

## Simple and User-Friendly Multi-Layer Series with Asymmetric Front and Back Design!

Containers : UVCS-40 • UVCS-50 • UVCS-60

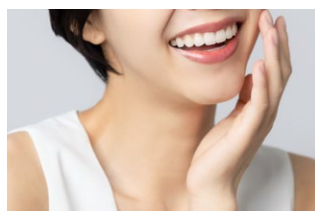
Plugs: LD-30,50HS Plug A(φ 1.2)

LD-30,50HS Plug B(φ 2.2)

Cap : UVCS-CAP



Introducing a new multi-layer bottle with an EVOH barrier and featuring different shapes for the front and back of the bottle. It offers good squeezability, making it ideal for foundation and UV care products.



Scan here for  
details >>>



# Multi-layer EVOH Bottle Series

## UVCS-40/50/60



Depending on the product image, you can choose from two different options for the shape of the front of the bottle.

### <Product Information>

Name	Shape	Standard Capacity	Overflow Capacity	Size	Material	Molding Method
UVCS-40	Other	40mL	44mL	75H×41W×28L	Multi-layer/ EVOH	EBM
UVCS-50	Other	50mL	54mL	89H×41W×28L	Multi-layer/ EVOH	EBM
UVCS-60	Other	60mL	65mL	103H×41W×28L	Multi-layer/ EVOH	EBM
UVCS-CAP	Other			30H×40W×28L	PP	Injection

### <Compatible plugs>

Name	Shape	Orifice Dia	Size	Material
LD-30,50IIS Plug A( $\phi$ 1.2)	Round	$\phi$ 1.2	12 $\phi$ ×20	LLDPE
LD-30,50IIS Plug B( $\phi$ 2.2)	Round	$\phi$ 2.2	12 $\phi$ ×20	LLDPE